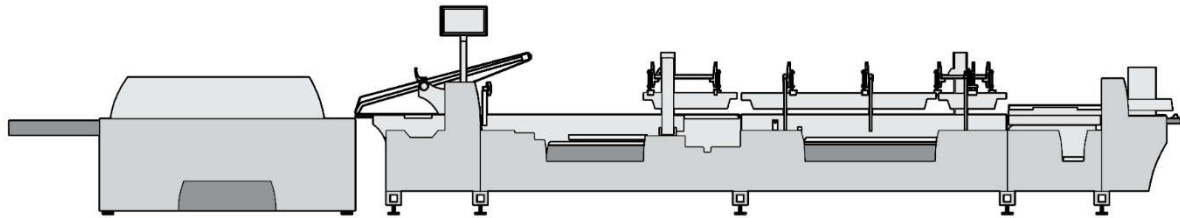


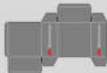

MK Masterwork

MK Diana Go 85

Technical specifications



Compression and delivery section Transfer station Folding station - Prefolder Blank alignment module
optional Feeder

Machine versions:		
MK Diana Go 85	●	○

● = Standard ○ = Option

Basic data:	MK Diana Go 85
Length, basic machine:	9,1 m (9,9 m with blank alignment module)
Width, basic machine:	1,7 m
Power consumption:	on request
Machine speed:	250 (300) m/min

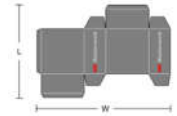
Material	Folding boxboard (g/m ²)	Corrugated board
Folding cartons	200 – 600	N-, F- flute
Lockbottom cartons	200 – 600	N-, F- flute

Carton types:

Straightline folding cartons	W	L
MK Diana Go 85	*1 75 – 850 mm	*2 90 - 400 mm

*1 45 mm with miniature carton attachment

*2 55 mm with alignment module



Lockbottom cartons	W	L max.	D	H (min.)	A (min.)	B (min.)
MK Diana Go 85	146 - 850mm	600 mm	30 – 200 mm	*1 60 mm	40 mm	30 mm

*1 50 mm with alignment module

